



Brochure

Sage X3 Web Scheduling

Optimize production plans

Sage

Table of Contents

Page 3

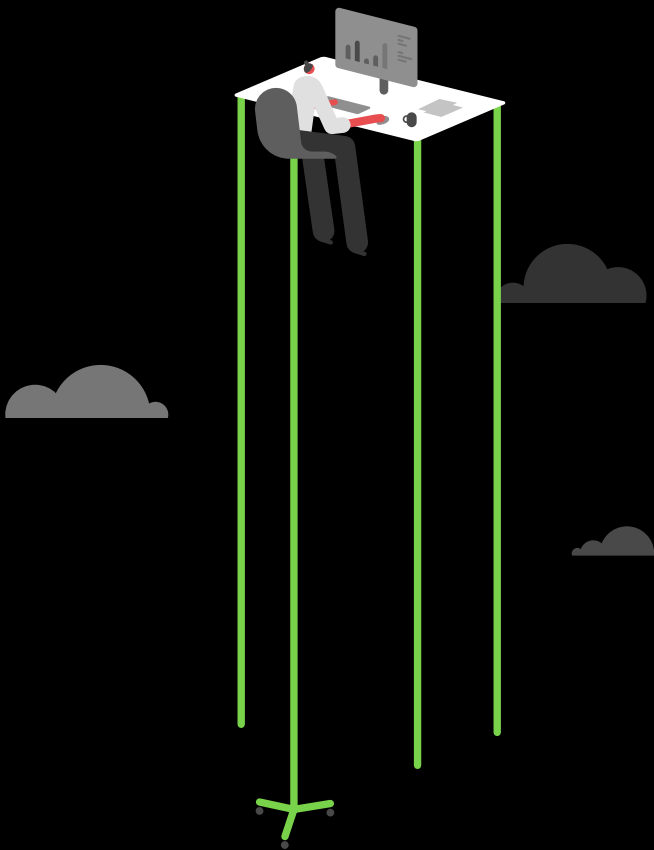
Optimize your production planning with Sage X3 Web Scheduling

Page 4

Automated production planning

Page 5

Compelling digital transformation





Optimize your production planning with Sage X3 Web Scheduling

Leading manufacturers use Sage X3 Web Scheduling to optimize their production processes and make the most efficient use of resources.

It allows you to create feasible plans, then visualize and refine, with the option to bring in colleagues and create different versions. Whenever changes take place, the status is automatically recalculated to show you the impact.

So you can easily synchronize your entire supply chain, reduce non-productive times, remove bottlenecks, identify missing materials and PO delays, and react quickly to disruptive events.

It's manufacturing at its most efficient.

Automated production planning

Sage X3 Web Scheduling is a web-based platform that provides automated planning of production processes. It also allows manual editing and fine-tuning, providing a great degree of control.

Sage X3 Web Scheduling supports simultaneous scheduling sessions by different planners and allows the creation of different versions of the production plan within a scheduling session.

One of the key features is the capability to continuously recalculate the production plan's status in real time as it is being worked on, allowing users to immediately verify the global effects of any local modification.

To support users in building consistent production plans that meet the business goals with optimal efficiency, The Web Scheduling logic can be configured to take into account a wide range of factors, such as delivery deadlines, order priorities and dependencies, resource capacity constraints, production downtimes, and more.

- Multi-simulations, algorithm and heuristics.
- Simulation analysis.
- Sequence optimization.
- Manual optimization.

A highly customizable graphical user interface (GUI) is designed to enhance the user experience and can be tailored to display the information that is considered most relevant.





Compelling digital transformation

Sage X3 Web Scheduling supports the goals of the business, ensuring delivery dates are met, optimally using available manufacturing resources as efficiently and effectively as possible.

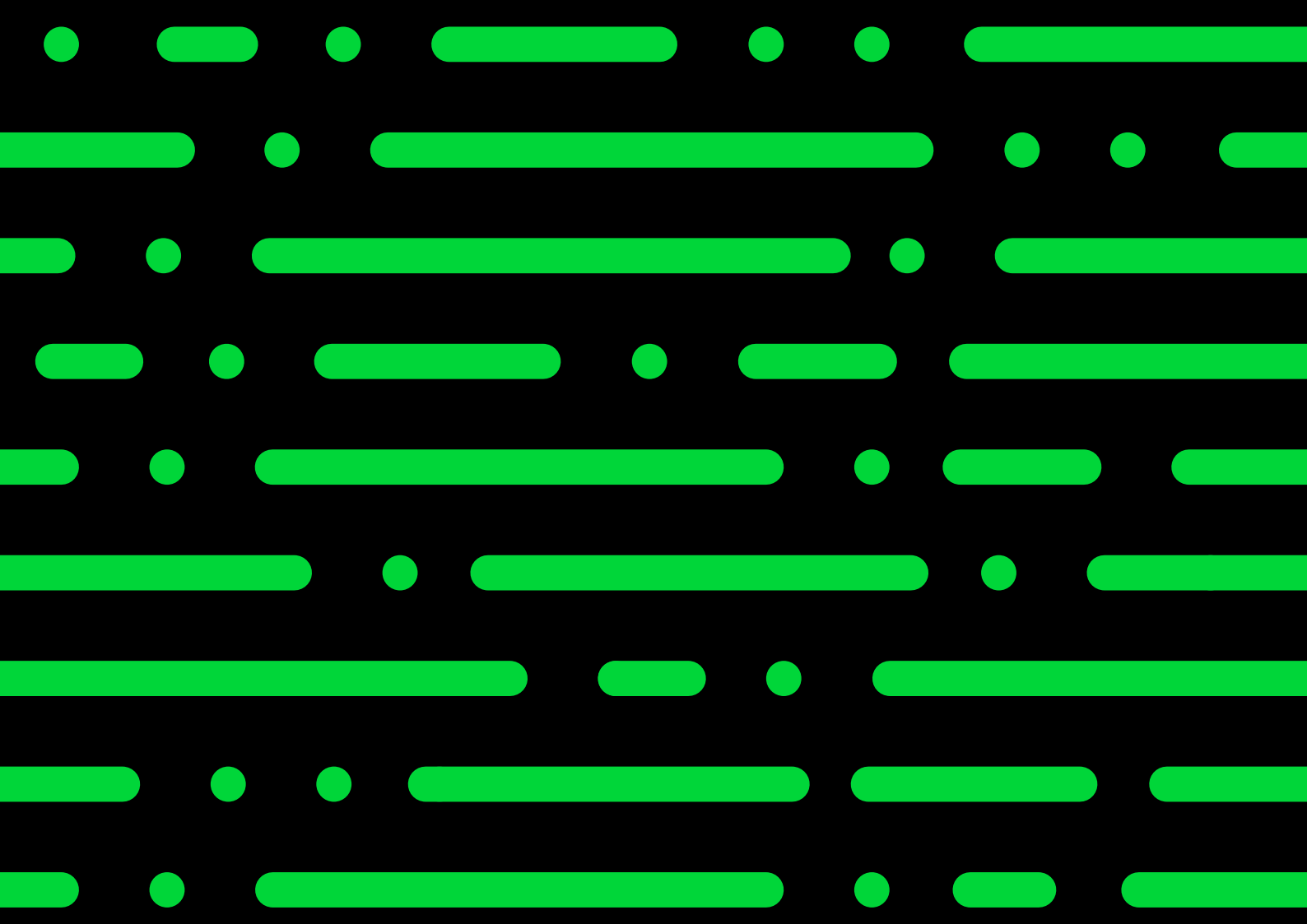
Create feasible and optimized production plans, reduce required setup time and manage production constraints such as materials, workforce and tools.

Drive efficiency by synchronizing the entire production chain, from customer orders and work orders. Identify material and tooling constraints.

Reduce queue time, quickly identify bottlenecks, and react fast to disruptive events.

Effectively manage priority changes, urgent orders and gain real-time visibility into shop floor issues while creating an optimized production sequence.

- 30% reduction in setup times.
- 20% reduction in downtime.
- 5% improvement in service levels.
- 60 to 80 % improvement in order promising accuracy within stated delivery week.
- 12% reduction in late orders.



©2022 The Sage Group plc or its licensors. Sage, Sage logos, Sage product and service names mentioned herein are the trademarks of The Sage Group plc or its licensors. All other trademarks are the property of their respective owners. WF 1727921.

All content in this document has been produced in partnership with Sage X3 Web Scheduling.